

Equity Access Building a Community of Educators & Students Focused on Disability Health Care

Rebecca Kronk PhD MSN CRNP FAAN CNE ANEF

Professor/ Associate Dean for Academic Affairs

President, Alliance for Disability in Health Care Education (ADHCE)

<https://www.adhce.org/>

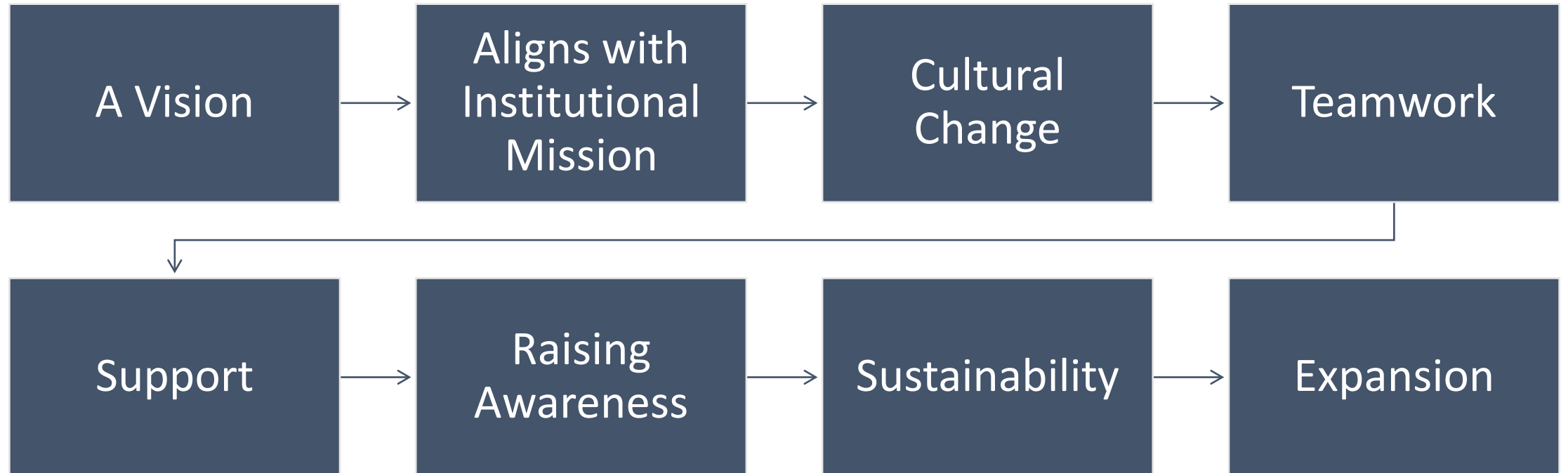
Duquesne University, Pittsburgh PA

kronkr@duq.edu

Equity Access Program

- Goal: to educate and empower nurses and other allied health professionals to make healthcare fully accessible to people with disabilities through innovative teaching strategies and engagement with individuals living with disabilities.
- Maintained since 2019 through grants
- Recognized agency to receive funding through the United Way workplace campaign
- Three components
 - Consultant with Disability Simulation Program
 - Stages II Summer Camp
 - Equity Access: Online Nursing Education on Care for People with Disabilities

Building Momentum



Consultant with Disability Simulation Program



HELP OUR NURSES DO BETTER.

Become a Simulated Patient Consultant and help improve care for persons with disabilities.

What is the Consultant with Disability Simulation Program?

This program provides a safe environment to teach, enhance, and assess the knowledge, skills, and behaviors of future nurses. Most programs use trained actors to serve as “disabled patients” during simulated educational exercises. At Duquesne, we aim to give persons living with a disability a stronger voice. Instead of actors, individuals living with a disability serve as Simulated Patient Consultants (SPC). This provides nursing students with a more authentic experience and provides the SPC with an active role in shaping the care future nurses will provide.

What does a Simulated Patient Consultant (SPC) do?

As a SPC, you will portray yourself or role-play an additional condition to provide students an accurate recreation of what you encounter in a health care setting.

- All SPC encounters are respectful, noninvasive and may help students practice physical exam skills, communication skills and history taking.
- No acting experience is required – mostly you just need to be yourself!
- After training and instruction, SPCs may be contacted several times a year. You can participate based on your availability.
- All SPCs are compensated for their time.

Who Should Participate?

Any person with a disability interested in helping nursing students develop the skills to properly care for persons with disabilities.



Simulated Patient Consultants meet virtually for a telehealth encounter.



Contact Information

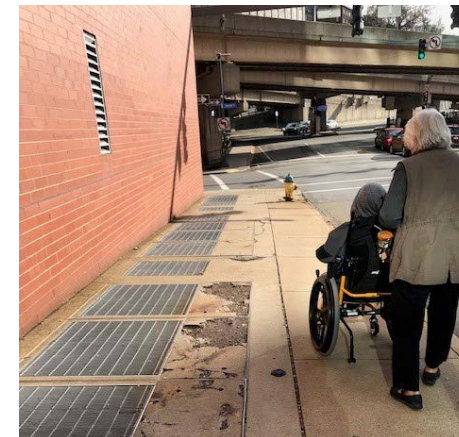
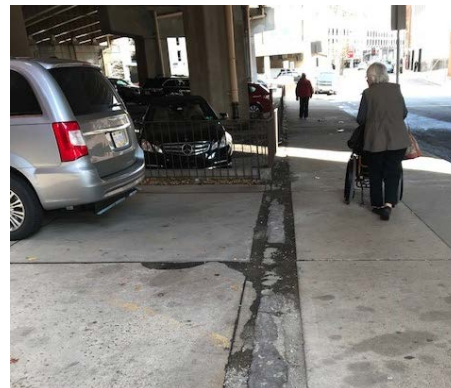
If you are interested or have questions, [contact](#)

Rachel Means

Meansr@duq.edu
412.396.5203

Things to Think About

- Accessibility & Flexibility
- Fire Safety
- Staffing
- Training
- Recruiting
- Payment
- Policies and Procedures
- Student, Faculty and SP assessments & feedback
- Continuous Improvement
- Building a Sense of Community through newsletters and announcements



Summer Theater Camp





Equity Access: Online Nursing Education on Care for People with Disabilities

Developed to provide an introduction to the specialized knowledge related to the care of individuals with disabilities, with a focus on advocacy. The modules include multiple teaching strategies and can be assigned as supplemental to existing coursework.

<https://equityaccess.org/>



The Alliance for Disability in Health Care Education

- Interdisciplinary
- Advances effective, appropriate and high quality health care for persons with disabilities by promoting inclusion of disability rated theory, research, and clinical learning experiences in health care.
- Aims to establish professional standards and competencies designed to promote and deliver high quality healthcare for all people with disabilities across the lifespan.
- Leader and resource to promote health related professional curriculums.
- <https://www.adhce.org/>

Discussion/
Questions

